

Validator Update Instructions for Rowe BC 35 \$1-\$20

The kit you have purchased includes the following items: Metal validator slide plate, kit module in black plastic box, and a jumper.

1. Unplug the power cord from the wall and open the lid of the changer.
2. Remove the bill transport by unplugging both connectors and sliding it forward out of the tracks.
3. Plug the kit's jumper harness BCHARNJUMPER9 into the now open 9-position connector found in the parts kit. This is the male plug with the 2 short black wires. The 6 position connector is no longer used. See figure 2.
4. Remove the bill box(es) from the stacker assembly.
5. Remove the stacker assembly by unscrewing the two ¼" screws. It may be necessary to hold the nuts under the assembly with a pair of pliers. Disconnect the harness from the upper rear right hand side. Slide the stacker assembly forward out of the changer. If your changer has the optional dual stacker it is also necessary to remove the two ¼" screws that secure the lower section of the stacker to the cabinet.
- 6. Set the dipswitches on the validator, the various possible settings are printed on the module. Confirm the module is for a BC35.**
7. Unplug the 9-position machine harness at the Coin Acceptor Assembly. Insert the 9-position harness from the new Module into the open connector; see figure 3. If you are accepting coins insert the 9 position female connector from the module into the connector of the Coin Acceptor Assembly. If you are not accepting coins, the 9-position plug with male pins from the module should remain unconnected.
8. Mount the kit module to the partition wall behind the Coin Acceptor Assembly using Velcro. If the alarm canister is no longer in the machine, the module can be inserted in the clips that originally secured the canister. See figure 3.
9. Remove all 3 hoppers.
10. Unbolt the two 3/8" bolts that secure the Coin Dispenser Assembly 6-50275-xx. Remove the assembly by tilting the unit forward and unplugging the wiring harness. Then slide it all the way to the left until the rod on the right hand side comes out of the mounting cradle. Lift the assembly out of the changer.
11. Route the harness with the 4-position "Y" style connector to the rear of the partition wall and through the 2-inch hole with the rubber grommet.
12. The Power Control Center Assembly 6-50426-04 has four wiring connectors on the rear. From the left they are designated J201, J202, J203, and J204. Unplug the harness at J204 and insert the interface harness with 4 positions. Plug the harness originally from J204 into the new harness. See figure 5.
13. Reinstall the Coin Dispenser Unit and connect the harness. Reinstall the hoppers.
14. In order to mount the validator to the slide plate it is necessary to replace the mask with one that has been modified. After the replacement mask has been attached to the validator, mount the validator onto the validator plate using the 4 nuts in the parts bag.
15. Slide the validator plate assembly down the tracks that originally secured the transport. Attach the harness from the module with the long black connector to the validator. Note the position of the two "keyed pins" when attaching the connector.
16. Remove either of the 2 wires from the coin return switch; red or black. Slide the bare terminal into the ¾" piece of shrink tube provided with the kit. Heat the tube to encase the bare terminal.
17. Plug the power cord into the outlet, and confirm the power switch is in the on position.
18. Insert several \$1.00 dollar bills and then \$5.00 dollar bills to confirm proper operation.
19. You are finished.

IMPORTANT NOTES:

The update kit does not affect the programming of the pay outs. The amount of coins dispensed from each hopper is still programmed by turning "on" the multiplicative dip switches on the control board. This information is silk screened on the board cover and explained in the changers owner manual.

The following option settings on the Computer Control Center no longer function:
\$1 accept, \$5 accept, increase \$1 accept, and alternate (stacker mode)

Installation Instructions for Hopper "Low Coins" Screws in Rowe Dollar Bill Changers for Kit Modules accepting \$10 and \$20

These instructions apply to the final step of installing a kit Module to upgrade a Rowe changer for the acceptance of \$10 and \$20.

Upon completion of the installation of the kit module, the changer should be tested. The changer can now make change for \$10 and \$20 dollar bills. When a \$10 bill is inserted the amount of coins programmed for a \$5 pay out is dispensed twice. When a \$20 bill is inserted the amount of coins programmed for a \$5 pay out is dispensed 4 times. Be sure the dip switches on the Mars AE2611 validator is set up to accept \$10 and/or \$20 bills and test the kit.

Upon verification that the kit and changer are working properly a low coins screw is installed. This must be installed to prevent short changing a customer. If the changer is in an attended location and the hoppers never empty, it is not necessary to install the low coins screw.

The screw is used to detect ground through the coins in the hopper. When coins are not touching the screw and the metal wall of the hopper the Module will disable the validator until more coins are inserted. The kit Module will automatically reset when additional coins are inserted.

MC PAYOUT INFORMATION

If the changer is being used in the MC mode, a screw sensor will only need to be installed in the last hopper to be emptied; left hopper on 2 hopper models and center hopper on 3 hopper models. Changer models BC25MC, BC12, and BC35 have the MC option.

The parts kit consists of a single harness. The hopper that will empty first should be monitored. The Module is capable of monitoring up to 3 hoppers. Additional harnesses are available at no charge by calling (800) 814-7756.

INSTALLATION INSTRUCTIONS

1. Turn off the changer.
2. Remove the hopper(s) from the changer and set it in a work area. If it is filled with coins, remove the coins.
3. Drill an 11/64" hole in the black plastic area at the bottom of the hopper. The hole should be located at the center of the hopper and 7/8" from the very bottom of the plastic. Positioning is important so that a coin does not get wedged between the screw and the hopper body. See Figure 1.
4. Insert the screw through the hole. Reach your hand into the hopper and align the nut. Begin tightening the screw while holding the nut. When the nut is almost fully tightened, slip the open spade terminal under the screw head. Finish tightening the screw so the harness is held securely in place. The terminal should be positioned so that it is vertical, "3:00 or 9:00". See figures 1 and 2.
5. Once the hopper has been modified place it back in the changer.

6. Run the harnesses directly down to the bottom of the hopper and then across towards the module. Be sure to position the harness(es) so they do not interfere with the coin delivery or the other hoppers.
7. Disconnect one of the black wires (with pick insulators) terminals at the module. Any of the 3 can be disconnected.
8. Connect the wire from the hoppers to the now open female connector. The wires with the male terminals are now left open.
9. **Confirm there are not any open female connectors, as this will disable the validator.**
10. Load coins into the hoppers so the screw threads are covered.
11. Turn on the changer. After a 10 second warm up period the validator will accept bills.



Figure 1



Figure 2

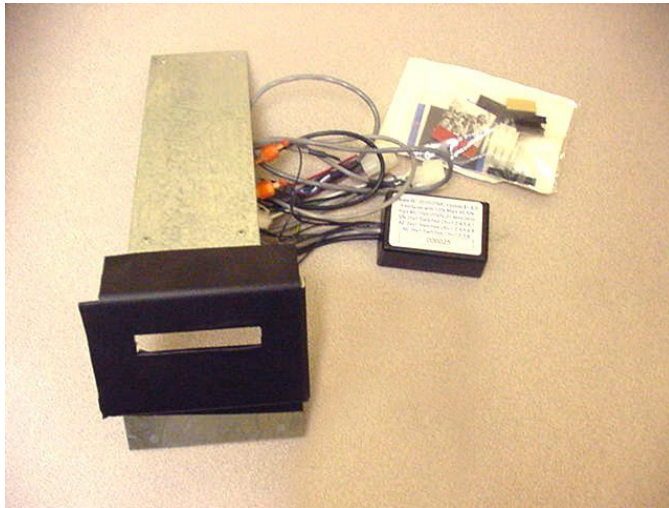


Figure 1

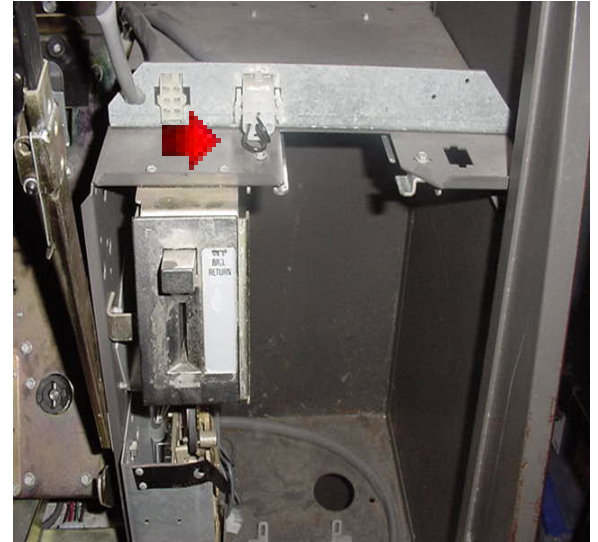


Figure 2



Figure 3

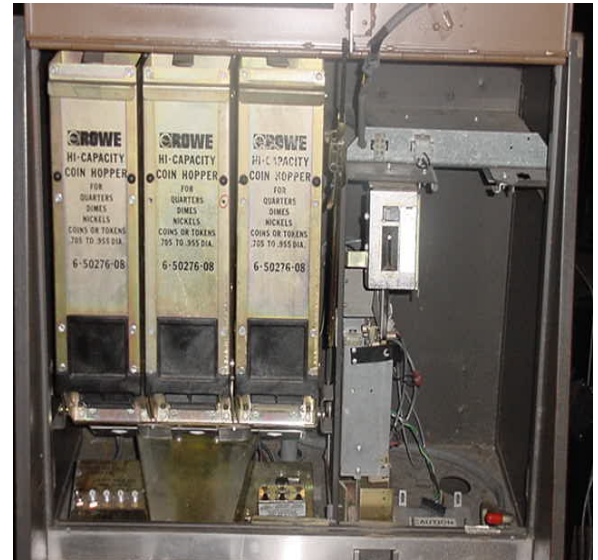


Figure 4



Figure 5

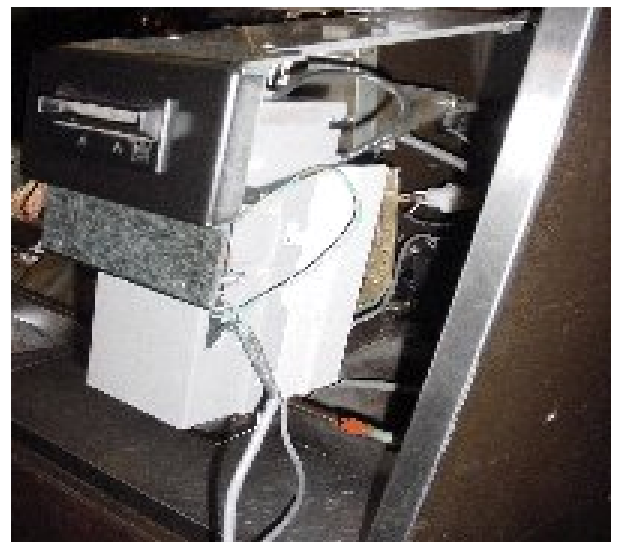


Figure 6

NEED HELP?

VISIT US ONLINE AT OUR YOUTUBE CHANNEL FOR FREE HELPFUL INSTALLATION AND TROUBLESHOOTING INFORMATIONAL VIDEOS.

GO TO: "WWW.YOUTUBE.COM/CAPITALVENDING" & SEARCH FOR KEY WORDS RELATING TO YOUR KIT. ADDITIONAL PAID VIDEOS ARE OFFERED AT "WWW.CAPITALVENDING.COM"

SCAN THIS QR CODE WITH YOUR SMARTPHONE TO BE BROUGHT DIRECTLY TO OUR YOUTUBE CHANNEL



Capital Vending, Inc. 800-814-7756

Vending Machine Kits - Repairs - Advance Replacements

www.CapitalVending.com